



Cazenove Road Stoke Newington, London N16

---

# Cazenove Road

## Stoke Newington

### London N16

---

Beautiful spacious one bedroom period conversion located close to all good local amenities.



## DESCRIPTION

This superb property is set on the split-level first floor of an attractive detached Georgian house offering bright, well-proportioned rooms throughout. The accommodation comprises on the first floor a stylish modern tiled bathroom, double bedroom with built-in wardrobe, and stairs down into a generous open-plan living room and smart contemporary kitchen area with integrated appliances. Off-street parking is available at the front of the building on a 'first come' basis. Cazenove Road is conveniently situated just a few moments from local shops and supermarkets on Church Street and The High Street, with the River Lea and wonderful Springfield Park practically on the doorstep. Excellent transport facilities give easy access to The City and West End with numerous good local bus routes, and trains from nearby Stoke Newington Station (Overground).

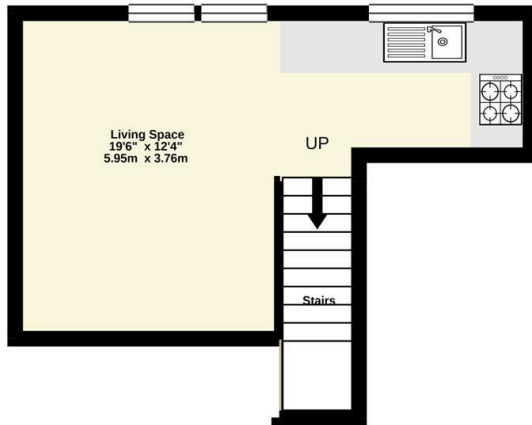
Leasehold

Asking Price £345,000

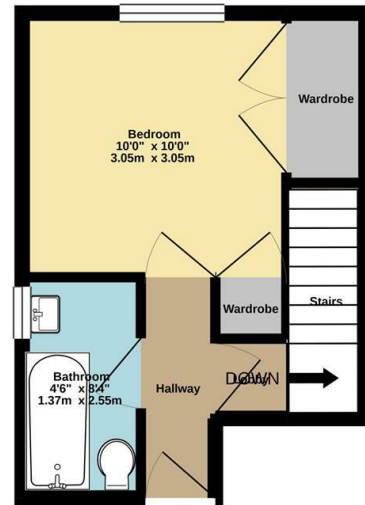




Ground Floor  
205 sq.ft. (19.0 sq.m.) approx.

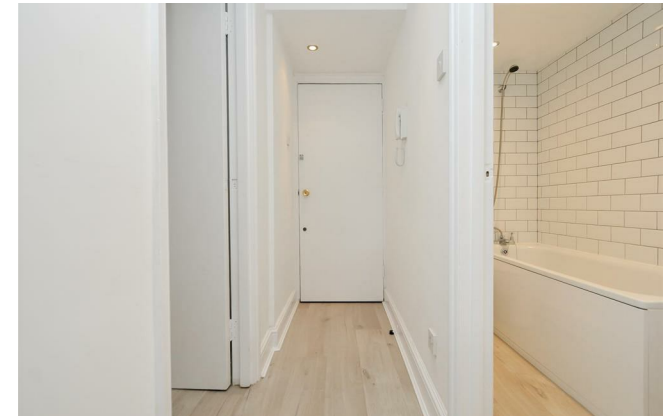


1st Floor  
222 sq.ft. (20.6 sq.m.) approx.



TOTAL FLOOR AREA: 427 sq.ft. (39.7 sq.m.) approx.

Whilst every attempt has been made to ensure the accuracy of the floorplan contained here, measurements of doors, windows, rooms and any other items are approximate and no responsibility is taken for any error, omission or mis-statement. This plan is for illustrative purposes only and should be used as such by any prospective purchaser. The services, systems and appliances shown have not been tested and no guarantee as to their operability or efficiency can be given.  
Made with Metropix ©2020.



Energy Efficiency Rating		Current	Potential
Very energy efficient - lower running costs			
(92 plus) <b>A</b>			
(81-91) <b>B</b>			
(69-80) <b>C</b>		70	73
(55-68) <b>D</b>			
(39-54) <b>E</b>			
(21-38) <b>F</b>			
(1-20) <b>G</b>			
Not energy efficient - higher running costs			
<b>England &amp; Wales</b>		EU Directive 2002/91/EC	